

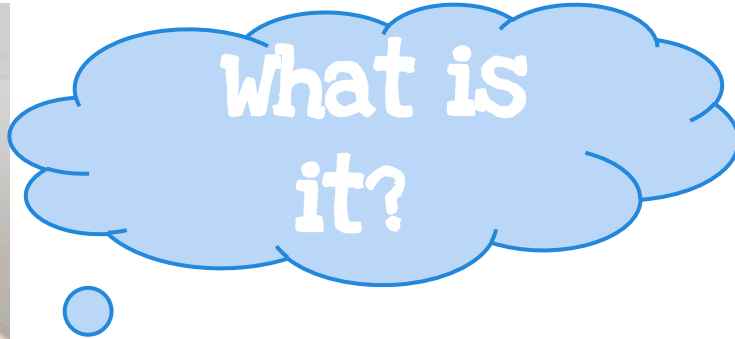
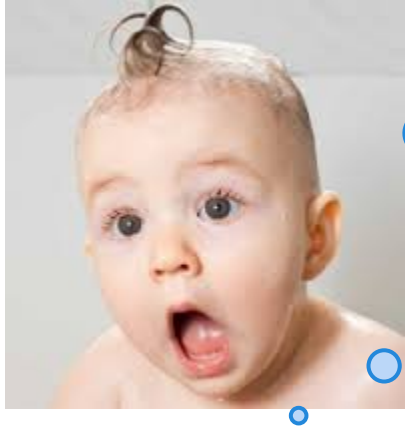
# Realtime Board

Tammy McLain

Technology Integration Specialist

Region 16

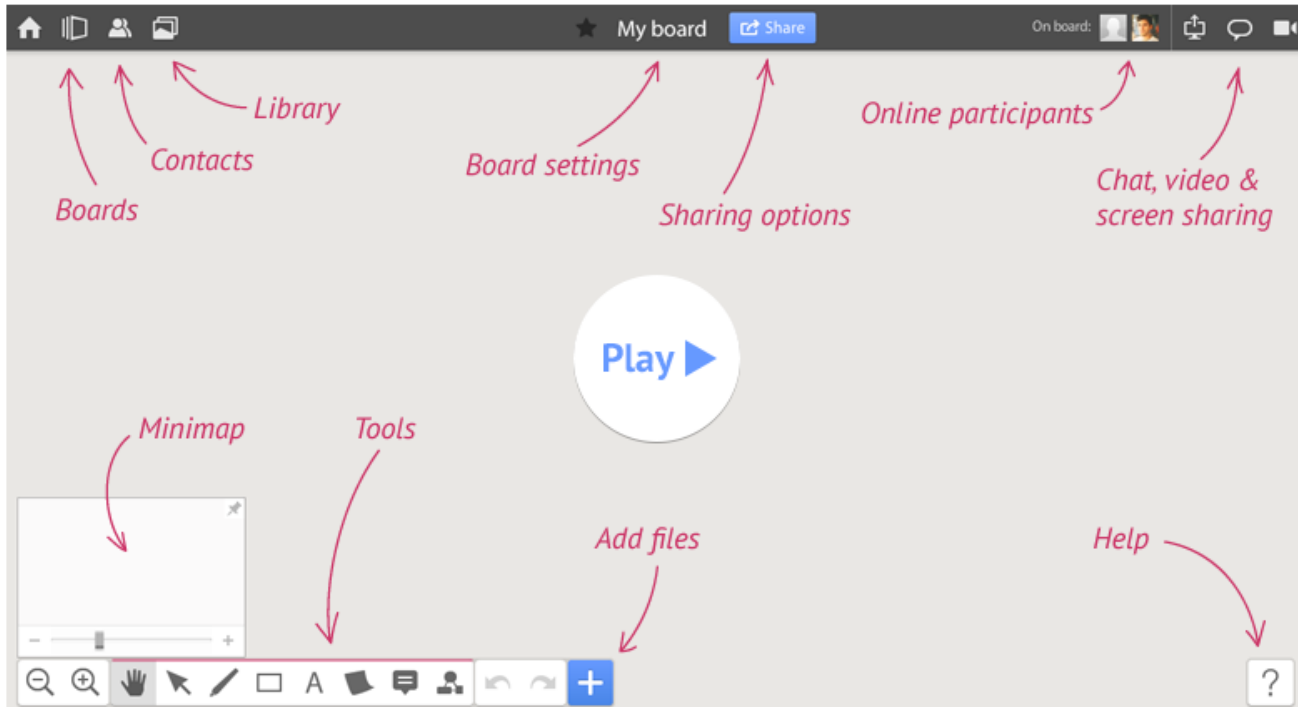
# Realtime Board



- ★ online, endless, enhanced whiteboard
- ★ share and download
- ★ free, education account

# Realtime Board

## The interface explained



# Realtime Board

The screenshot shows the Realtime Board web application interface. At the top, there is a dark navigation bar with a home icon, a menu icon, a "Get started" button, the user name "Tammy McLain" with a profile picture, and a "Help" button. Below the navigation bar, the main content area is divided into several sections. On the left, there is a "Create board" button with a plus sign icon. To its right, there are three board thumbnails: "Weebly the W...", "Welcome bac...", and "Google Drive". Further right, there are navigation tabs: "Upload a board", "My boards", "Shared to me", "Favorites", "Active boards", "Online users", and "Latest updates". The "Active boards" section is currently selected and highlighted in blue, showing an "Invite friends" button with an envelope icon and the text "Find your friends by inviting them via email". The "Latest updates" section is also highlighted in blue and contains the text "Invite your friends to your boards and receive email notifications about the changes".

Home Menu Get started Tammy McLain Help

Upload a board My boards Shared to me Favorites Active boards Online users Latest updates

Create board

Weebly the W... Welcome bac... Google Drive

Invite friends

Find your friends by inviting them via email

Invite your friends to your boards and receive email notifications about the changes

# Realtime Board

Create new board

Title

Private

Selected members only ▼

Invite participants

Enter emails separated by commas

[Add personal message](#)

[Share with the team](#)

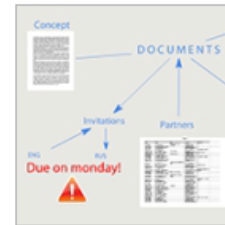
Create

Cancel

Choose a template



Blank



Mind Map



Prototyping



Start

Skip

# Realtime Board



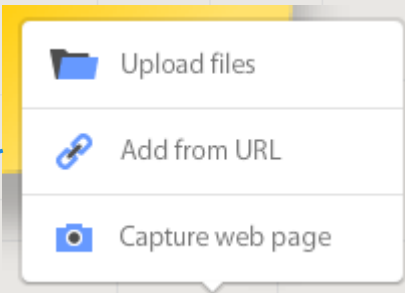
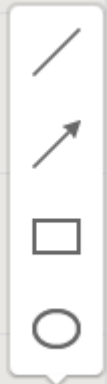
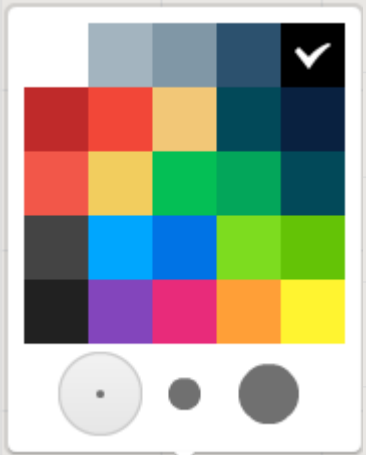
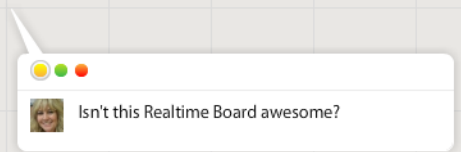
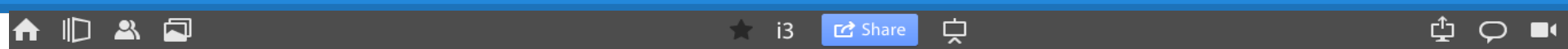
A screenshot of the Realtime Board application interface. The top navigation bar includes icons for home, boards, users, and documents, along with a star, the text 'i3', a 'Share' button, and a camera icon. A 'Library' panel is open, displaying various templates such as 'IconFinder', 'Shapes', 'Prototyping', 'Tables and Charts', 'Business Canvases', 'Saved files', 'From extension', and 'Google Drive'. A 'Share' menu is open, showing options like 'Invite participants', 'Add personal message', 'Submit', 'Share with the team', 'Save as image', 'Save as PDF', 'Save to Google Drive', 'Download board backup', 'Copy board link', 'Embed into a website', and 'Post to Facebook'. A toolbar at the bottom contains icons for zooming, panning, drawing, and editing. A 'Feedback' button is visible on the right side.

Home

Your boards

Feedback

# Realtime Board



# Realtime Board



Definitely